

ShelbyACH

This module provides for electronic transfer of funds between bank accounts (replaces manual check writing for bills, as well as data entry for receivables and donations). This transfer by utilizes the standards developed by NACHA.

Features and Benefits

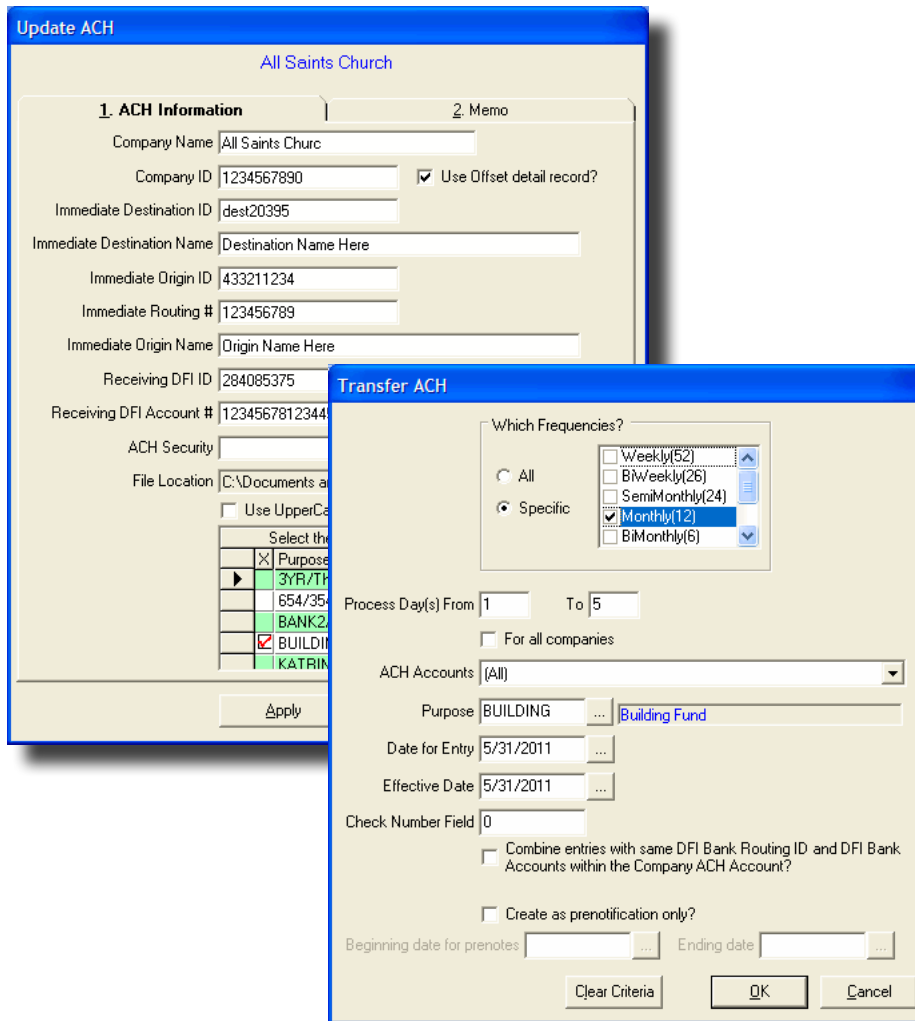
- Transfer funds electronically
- Credit or debit transactions supported
 - Direct debit from donor's account from Contributions
 - Direct payment to vendors
 - Direct collection of monthly fees: day care, school, etc.
- File for data exchange fully prepared
- File format: NACHA standard
- Overnight processing through the Federal Reserve
- Collection or payment consummated in 1-3 days
- Integrated with: Contributions, Donors and Gifts, Accounts Payable, and Accounts Receivable
- Saves money: no need for check stock
- Saves time: no need to print checks, no need for manually written checks, and no additional data entry
- Increases efficiency: contribution transaction posts to purpose, personal record, and to the General Ledger
- Eliminates the waiting time for funds to be available
- Applies to church building funds, weekly giving, school/day care, etc.
- Reduces bank reconciliation efforts
- Gives marked cost advantage over credit card method
- Eliminates problems related to mailing - lost, mangled, misdirected

Required modules:

- General Ledger

Requires one of these modules:

- Accounts Payable
- Accounts Receivable
- Contributions
- Donors and Gifts



ShelbyACH has multiple filters for processing Contribution transactions: by frequency, day of month, ACH account and Purpose code.