

# Terminal Services Optimizer

This utility enables you to optimize the use of your Shelby v.5 software. It takes advantage of programming that improves software performance where the programs are running over communication lines such as direct dial-up, Internet dial-up, or LAN.

---

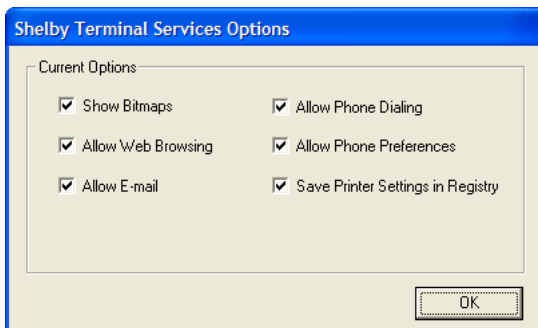
## Features and Benefits

- Increases speed by limiting display of non-essential graphics
- Graphics that guide the user continue to display (i.e. navigational buttons)
- Compatible with virtual private networks
- Increases speed when running over slow remote connections
- Increases speed on an internal network (intranet) having many terminals
- Saves time: “cosmetic” graphics such as pictures and line art used in your programs do not display, so loading time is reduced considerably
- Ensures more security and control for your system; using T.S.O. with your software enables you to assign or deny rights for sending/receiving e-mail, browsing the Web, and dialing telephone numbers
- Increases communication speed when running remotely
- Increases communication speed on an intranet having several attached users
- Has no effect on graphics displaying in non-Shelby v.5 applications
- Gives economical option for using old hardware

---

## Required Software:

- Any Shelby v.5 module
- Microsoft® Terminal Server



Connect to your information via Terminal Services.

