

Statistics

This module stores the data sent periodically to the denominational headquarters office by the individual churches associated with that central office.

Features and Benefits

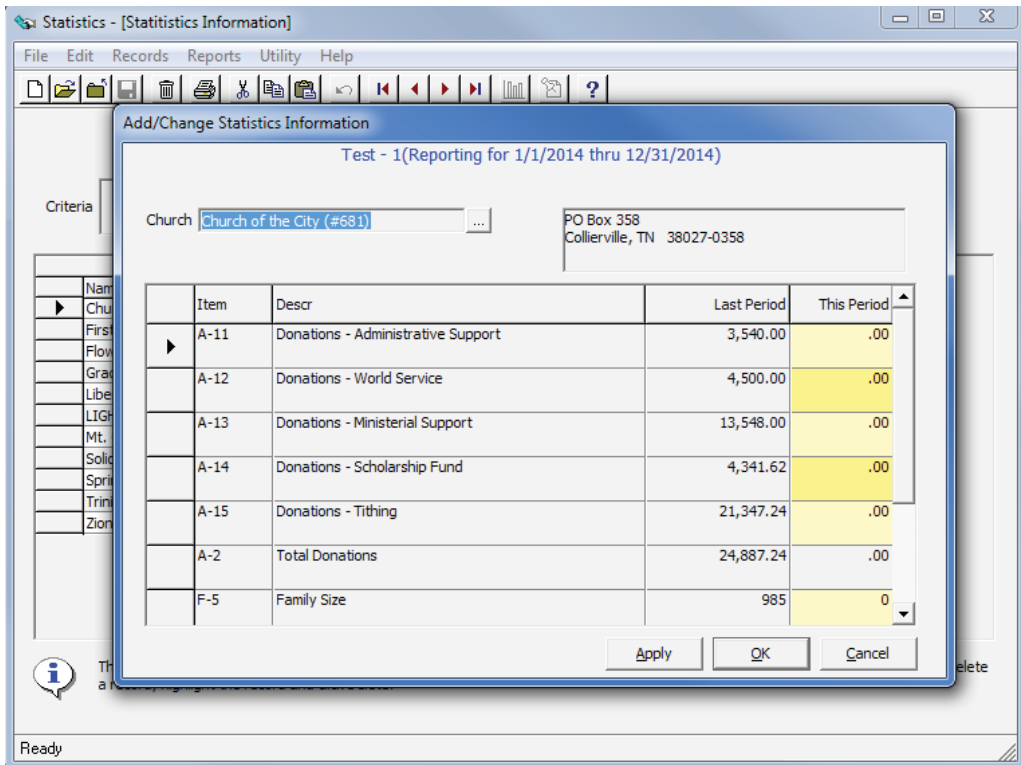
- Storage for all annual report data and church letters.
- Maintenance of data for multiple years.
- Data determined by office and/or denomination.
- Storage for numerical and dollar information.
- Data examples: baptisms, new members, transfers, budget amounts, etc.
- Reporting format determined by office or denomination: tables, forms, grids, etc.
- Reports stored by individual church.
- Summary data for major categories.
- Comparison to prior years for individual churches or groups of churches.
- Integration with Remittances module.
- Export capability into delimited text file.
- Manage all periodic reporting from churches within your jurisdiction.
- Calculate status of pledges and apportionments when interfaced with Shelby Systems.
- Edit forms and reporting instruments as needed.
- Easily produce the data in printed or electronic format for annual reporting.
- Print accurate, current reports whenever needed.

Required Modules:

- GlobaFILE

Optional module(s):

- Remittances



Add or change demographic data to track trends.