

Donors and Gifts

This module stores information on volunteer staff, individuals and other organizations, and various kinds of contributions and gifts.

Features and Benefits

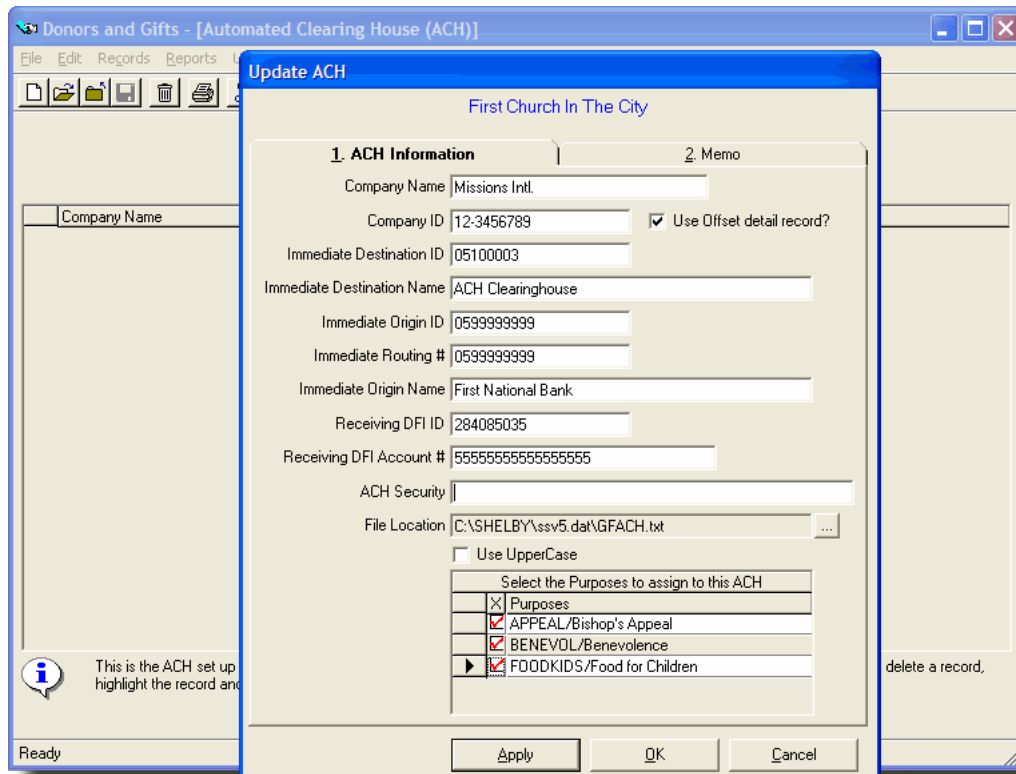
- Gift designations: Motivation, Purpose, and Media
- Track giving by individual and by congregation/parish using subdonor feature.
- Track gifts by campaign using Motivation field
- Track gifts by source using Media field
- Deductable, non-deductable, and in-kind gifts
- Unlimited pledge capability; date-driven pledge management
- Donor information includes general demographic data as contained in GlobaFILE, as well as data specific for receiving gifts: envelope number as another means of data entry, employment for purposes of tracking matching gifts, correspondence preferences
- User-defined fields
- Unlimited dated and profiled comments
- Extensive integration capability: word processing, spreadsheets, mail management, data entry tools
- Unique Key Comments advisory for individual or organization records
- Selections and Listings for standard and customized reporting
- Reduce data entry requirements with one database
- Streamline communication with targeted/segmented mailings
- Relate individuals and groups to other organizations
- Manage a variety of gifts: contributions, pledges, gifts-in-kind
- Analyze funding sources
- Integrates with additional modules: Matching Gifts, Commemoratives and Premium Inventory

Required module(s):

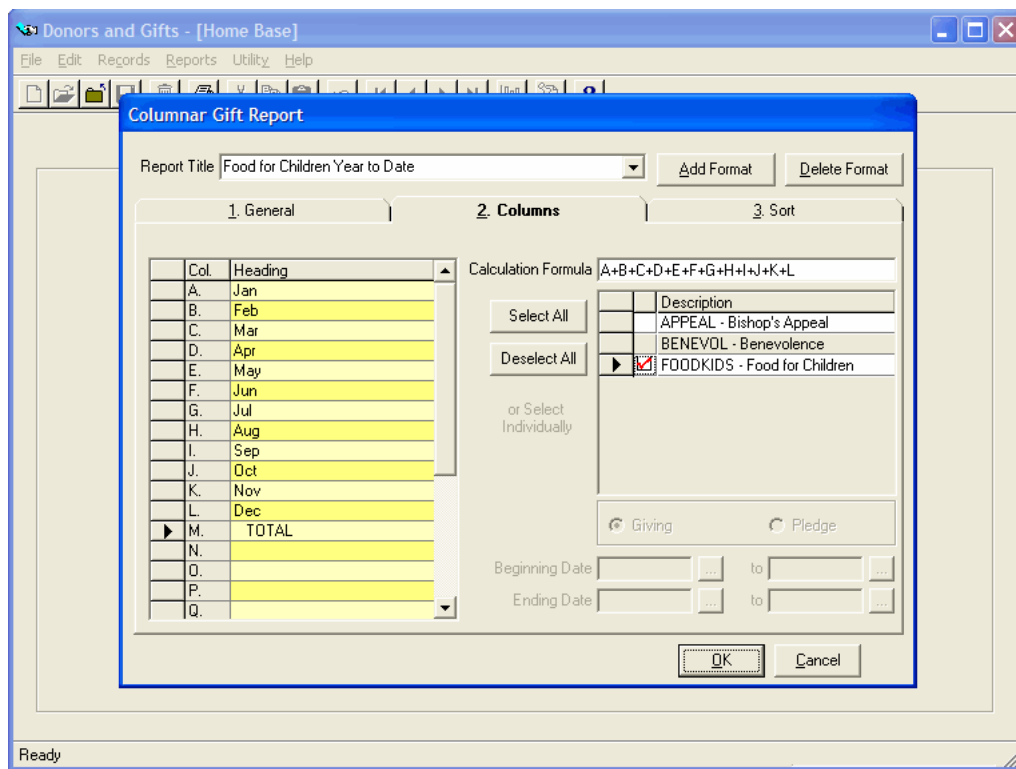
- GlobaFILE

Optional module(s):

- Matching Gifts/Commemoratives
- Premium Inventory



Never before has it been so easy to post donations. Simply "Process ACH" transactions and the information is entered. No more miskeys or mistakes to double-check.



Produce reports showing only the columns of information you want to see.