

# ShelbyTeller

ShelbyTELLER is a complete Check 21-compatible, electronic, check processing software that fully integrates with Shelby v.5 and Shelby Arena. The unique system scans and captures images of both front and back of checks, tithing envelopes, or other financial documents. Remotely depositing your checks saves you time and trips to the bank!

## Features and Benefits

- Adds stamped and virtual endorsements
- Creates a Check 21-compliant x9.37 cash letter or ACH file for electronic deposit
- CAR/LAR “reads” both the courtesy and legal amount of checks using OCR software technology
- Processes payments and posts into your Accounts Receivables module
- Creates a searchable archive of check images and payment documents
- Provides full reporting features and supports a batch processing environment
- Updates Contributions
- Complies with Check 21 regulations

## ShelbyTELLER FAQ

### 1. How much does ShelbyTELLER cost?

ShelbyTELLER is priced on a tiered structure, starting at \$1,100, based on the number of checks processed per year. There is an annual renewal fee for subsequent years. Your sales representative can help you estimate your annual number of checks with our check calculator, so contact him/her today for a price quote.

### 2. What is included in the purchase price?

ShelbyTELLER Software, support, and software installation.

### 3. Which scanners are compatible ?

ShelbyTELLER works optimally with Canon scanners. While other scanners may work with ShelbyTELLER, we strongly recommend purchasing units from, and supported by, Shelby Systems. Check with your sales representative for additional information.

### 4. What are the file formats of the import files?

The import file is XML. The bank import file is x9.37, a banking industry standard file format.

### 5. What is CAR/LAR?

CAR/LAR reads the handwritten Courtesy Amount (CAR) and the Legal Amount (LAR) on a check, compares the two, and returns the correct value with a high degree of accuracy. If this amount matches an expected amount determined by the accompanying stub, then the transaction is processed without operator intervention.

### 6. What fields are included in the Contributions import file?

The fields that are imported are: date, gift amount, purpose, scanned image of the front and back of checks, and any accompanying envelopes.

### 7. Are multiple purpose codes supported in the import?

Yes.

### 8. Can contribution amounts be applied to existing pledges?

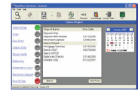
Yes.

### 9. My bank has offered us a scanner with (low/minimal/no) transaction fees. What does ShelbyTELLER (offer/provide) us that our bank does not?

ShelbyTELLER provides direct import into Shelby software. This integrated process saves you time and money, and it is fully supported by Shelby Systems.

## ShelbyTeller Processing Summary

1.  
Open  
ShelbyTELLER.



2.  
Scan checks and/or  
envelopes.



3.  
Verify amounts  
& exceptions.



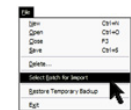
4.  
Export Check 21 file,  
send to bank.



5.  
Create XML file  
for Shelby.



6.  
Open Contributions,  
select XML file  
for import.



7.  
Finalize entries  
& process normally.

